

SUSTAINABLE
by DESIGN

More than

144 years of
PAPER MAKING

tradition in Slovakia



About Mondi SCP

Mondi SCP is 51% owned by Mondi Group, a global leader in packaging and paper, contributing to a better world by making innovative solutions that are sustainable by design. Mondi employs 24,000 people in more than 30 countries. We operate around 100 production sites, mostly located across Europe, North America and Africa.

49% of Mondi SCP shares are owned by ECO-INVESTMENT, a Czech based private investment and holding company, established in 1996 and primarily focused on investments mainly in CEE and South-East Europe. ECO-INVESTMENT's portfolio includes investments in pulp and paper industry, packaging, food industry, machinery energy, real estate and services.



Mondi SCP is the largest integrated pulp and paper mill in Slovakia.

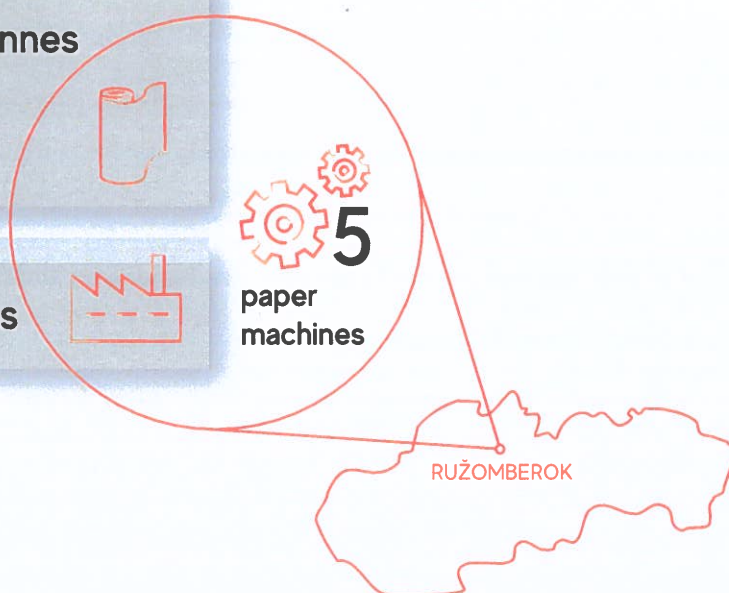
Production capacity

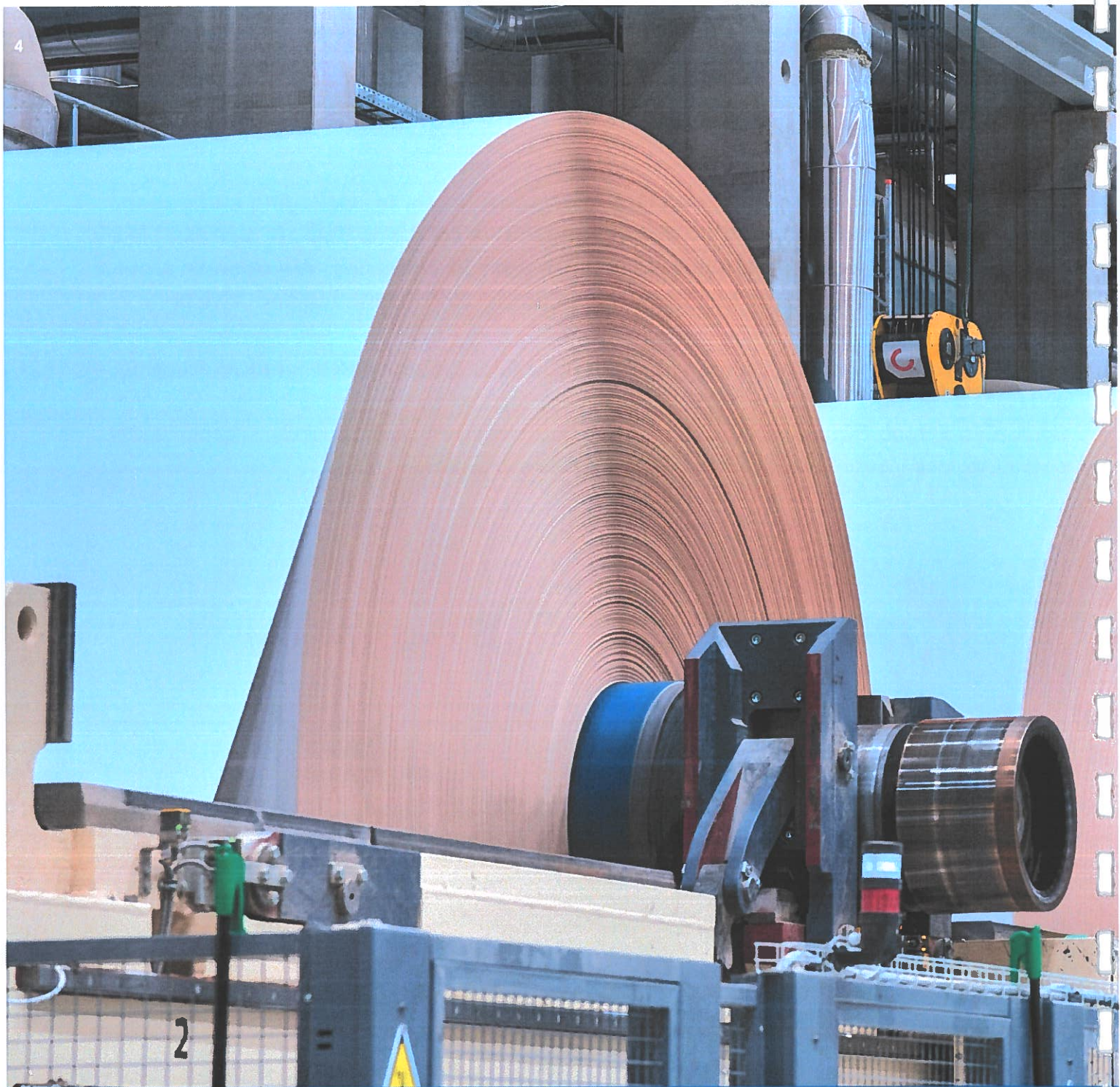
Uncoated fine paper: **580,000** tonnes

Containerboard: **310,000** tonnes

Kraft paper: **67,000** tonnes

Market pulp: **100,000** tonnes





Our products

Diversified portfolio of paper solutions which includes:

- **Graphic paper**

- Universal paper for home and office printers
- Professional printing
- Offset printing
- Hybrid printing – for a wide range of printing application

- **Packaging paper**

- Flexible Packaging – calendared kraft paper with high printability, strength and runnability
- Corrugated Packaging – containerboard from fresh, recycled and mixed fibres



Our material sustainability topics across the value chain:



Responsibly sourced raw materials



Efficient production



Sustainable paper solutions



Recycling

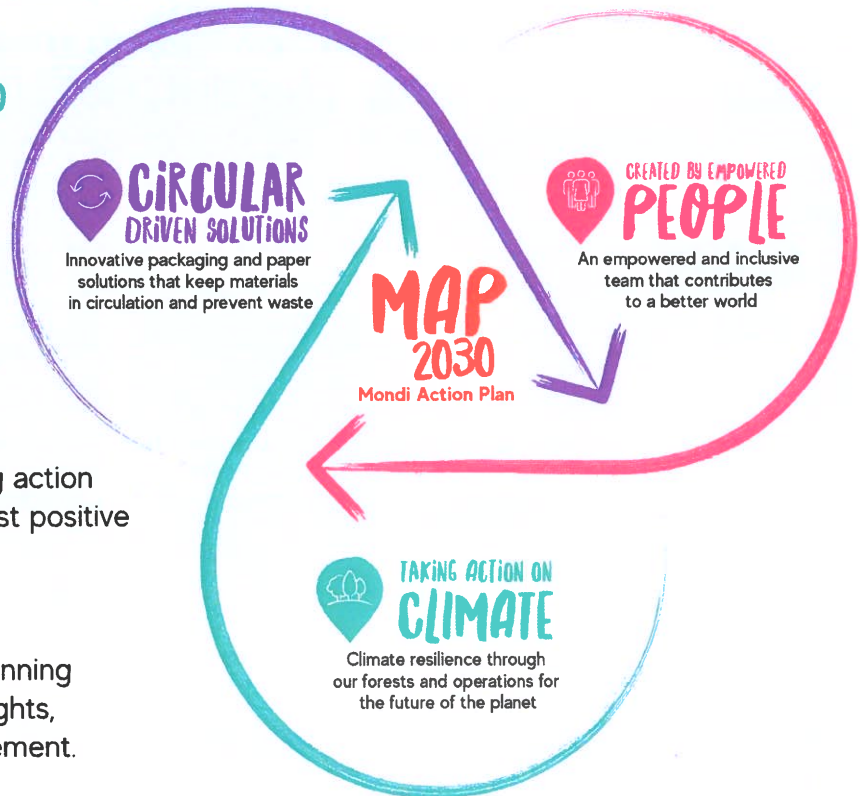
SUSTAINABILITY

IS AT THE CORE OF EVERYTHING WE DO

The Mondri Action Plan 2030 (MAP2030) sets out our targets, actions and milestones to meet our ambitious 2030 sustainability commitments.

Our focus on circular driven solutions, created by empowered people, taking action on climate enables us to have the most positive impact through our business.

This sustainability framework is based on responsible business practices spanning environmental performance, human rights, communities, and responsible procurement.



Built on Responsible Business Practices

Business Ethics & Governance | Human Rights | Communities | Procurement | Environmental Impact

Commitment to quality and sustainable solutions

2024 has been a highly successful year in terms of maintaining and enhancing the quality of our processes and products.

ISO 22000 certified paper machines

ISO 22000 sets out the requirements for a food safety management system and can be certified to it. Thanks to the excellent collaboration across departments, we successfully extended the certification to include PM18, Printing, Extrusion, and Finishing operations, therefore all our paper machines are ISO22000 certified. This is a significant step in confirming our standards in food safety and quality.

ISEGA certificates

After two years, we also updated our ISEGA certificates for pulp and paper made in PM 1, adding a new grade, ASW WS 50 gsm, in addition to the original grades. These ISEGA certificates strengthen our position in the field of hygiene and safety standards. We are also working with ISEGA to obtain compostability and recyclability certifications for our papers made in PM1 and PM19.

Recertification audits

In April 2024, we successfully passed the recertification audit for ISO 9001, ISO 14001, and ISO 45001, with no major findings, only recommendations for improvement. This is a testament to our ongoing commitment to enhancing quality, environmental, and safety standards.

Environmental achievements

In 2024 we obtained new Nordic Swan certifications for products produced at Mondi SCP. In the long term, we have been successful in reducing NOx and COD emissions, as well as reducing freshwater consumption, thereby contributing to meeting the MAP2030 goals. We have managed to find new ways of material utilisation for waste streams and thereby contribute to reducing the amount of waste deposited in landfills in the future.



Cradle to Cradle certification

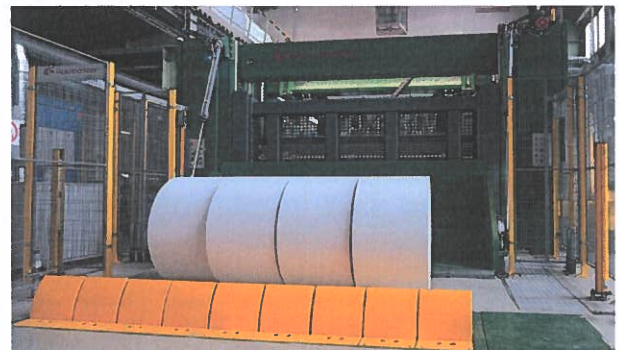
We also focused on updating and recertifying our Cradle to Cradle certification for UFP papers, reaffirming our commitment to sustainability and innovation in eco-friendly solutions.

All these achievements demonstrate our ongoing efforts to improve quality and sustainability, which not only enhance our competitiveness but also ensure long-term customer satisfaction.

Strengthening problem-solving skills with 8D Training

We also organised a Global 8D report training with a practical workshop, marking another step toward increasing the expertise of our teams in problem-solving and handling customer complaints. The eight disciplines (8D) model is a problem-solving approach typically employed by quality engineers or other professionals.

The purpose of the 8D methodology is to identify, correct, and eliminate recurring problems, making it useful in product and process improvement.



Installation of new rewinder

Mondi SCP has installed new equipment – a new rewinder that can produce more narrow paper reels, expanding their product range. Thanks to this modernisation we want to make sure our customers always have a steady supply of paper in both sheets and different reel sizes.

SAFETY ALWAYS FIRST

SAFETY AS OUR PRIORITY

Safety is our top priority, and we are focused on ensuring that everyone who works for Mondi returns home safely to their families each day.

In 2024, we recorded 12 minor incidents. Each was thoroughly investigated to identify root causes and implement measures to prevent recurrence, reinforcing our commitment to continuous improvement and a safe working environment.

In 2024, we:

- **Successfully completed our annual shutdown**, an essential but high-risk activity in which we undertake extensive maintenance work.

- **Reduced risks in relation to moving and rotating equipment.**

- **Continuously reassessed risks and enforced robust preventive measures.**

- **Continued to run our Engagement Board**, a platform for discussing various topics aimed at improving safety.

We are committed to working with our suppliers to raise safety awareness. Regular meetings provide an opportunity to share good examples and can be passed on to suppliers' employees. We regularly reward suppliers who achieve excellent results and are dedicated to improving safety at work.

We conduct regular audits to ensure compliance with safety rules, keeping safety and workplace behaviour a constant priority. Strong participation in the close call reporting system helps identify and address unsafe conditions, continuously improving workplace safety.

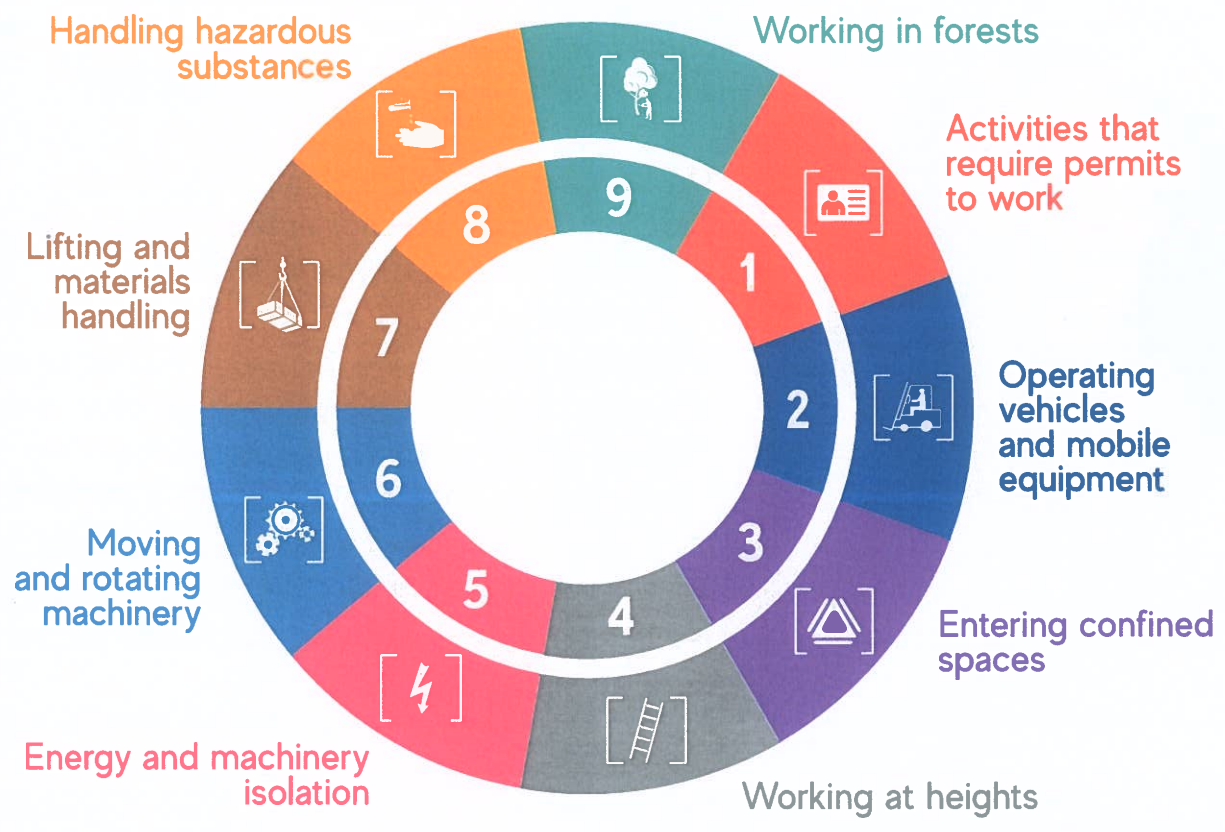
Our Guardian Angel initiative reinforces a culture of safety by preventing unsafe behaviour while also supporting local families facing difficult circumstances.





**Work safe.
Home safe.
Everybody, every day.**

Nine Safety Rules to Live By



OUR PEOPLE



New Managing Director

On 1 September 2024, Joachim Grünewald succeeded Matjaž Gorjup as Managing Director of Mondi SCP.

He is a native of Germany and joins Mondi SCP from Stora Enso, where he gained over 20 years of experience in managing mills and leading significant investment projects, including the commissioning of a multifuel boiler, the modernisation of a wastewater treatment plant, and the move to a fully automated wood yard. He also held the position of Managing Director of Maxau mill, Germany, for 16 years.

Joachim's priority will be to ensure the production site operates safely and smoothly. Working alongside the mill's team of professionals, he will seek out new opportunities for continuous process improvements and the further development of the mill.

Investing in our workforce

Mondi SCP is the largest private employer in the region, with our skilled and qualified employees serving as the driving force behind our success. In response to the early retirement of many employees over the past two years, we have prioritised succession planning. To ensure a steady pipeline of qualified talent, we provide targeted training and development programmes for key job positions. In 2024, our employees dedicated a total of 19,942 hours to various training sessions, including health and safety, legislative requirements, and other professional development courses.



STREDNÁ ODBORNÁ ŠKOLA
POLYTECHNICKÁ
RUŽOMBEROK



mondi scp

We have also introduced a new project, "The School for Future Electricians," in close partnership with the Polytechnical Secondary School in Ružomberok. This pilot programme involves eight employees, giving them the chance to obtain qualifications in electrical engineering, even without prior education in the field. Upon successful completion, participants will receive Section 21 of the electrical engineering qualification. The programme follows a well-structured curriculum and will conclude with a final exam in June 2025. This initiative supports our commitment to building a sustainable pipeline of skilled electrician specialists in this critical field.



SPECIAL EVENT

THE DAY WITH MONDI SCP

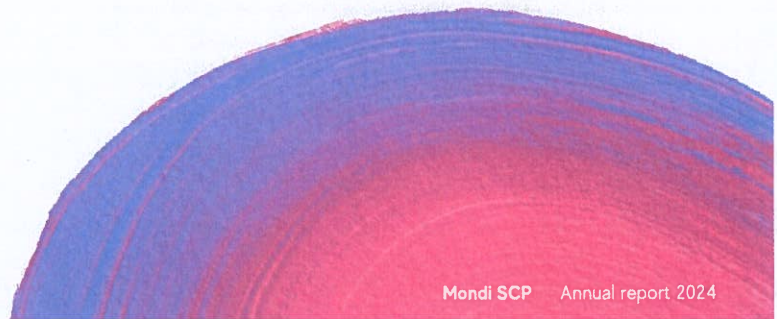


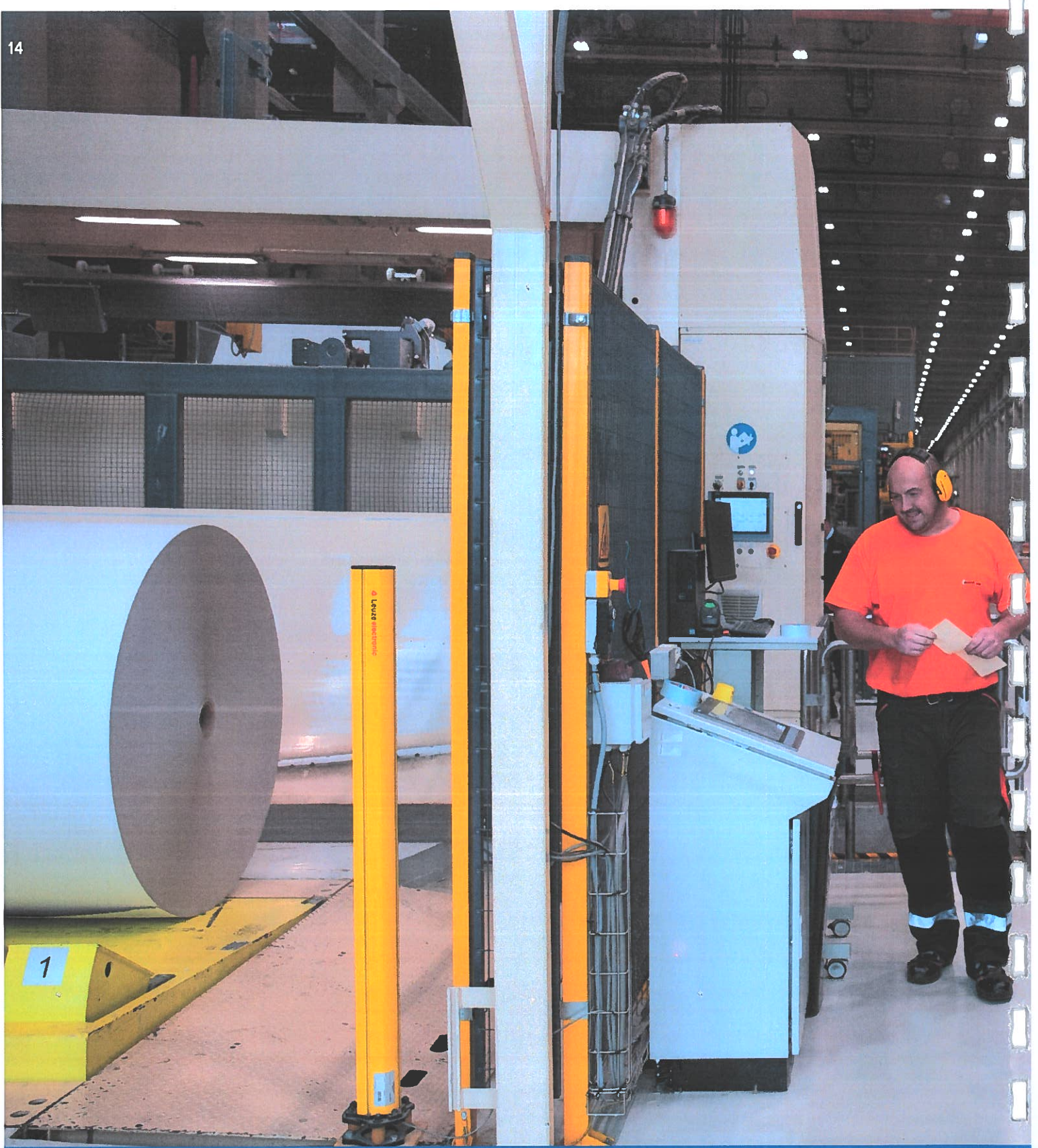
The Day with Mondi SCP in June brought together three events into one major celebration. The traditional Making a Difference Day (MADD), Environmental Day, and Children’s Day were all held at the Mondi SCP site, drawing hundreds of employees and their families.



The event featured a wide range of activities focused on safety, environmental education, and a demonstration of the firefighters’ work. There were also plenty of fun activities for children, including face painting, a magician, and birdhouse building, among many others. Visitors also enjoyed a guided mill tour and light refreshments.







Financial statements

2024



MONDI SCP GROUP KEY INDICATORS

Mondi SCP, a.s., (Mondi SCP), a Slovak leader in the production of sustainable packaging and paper, prepares its standalone and consolidated financial statements in accordance with the International Financial Reporting Standards (IFRS) as adopted by the EU. It produces home, office, professional printing and packaging papers.

Mondi SCP demonstrated resilience through the year 2024 in the face of ongoing difficult trading conditions, characterised by soft demand and a challenging pricing environment. This resilience highlights the strength of our cost-competitive, strategically located integrated asset and our great people. Furthermore, our ability to adapt with agility and flexibility to market uncertainties, combined with our unwavering focus on product quality, reliability and innovation in offering a diverse portfolio of sustainable packaging and paper solutions, has been central to delivering value to our stakeholders. The demand for sustainable products is providing many opportunities for Mondi SCP and is one of key drivers of our growth. Our investments over the last few years, enhancing our unique uncoated fine and packaging paper platform and product offering for our customers, will support this growth.

BASIC FINANCIAL INDICATORS (IFRS) in thousands of EUR	Mondi SCP Group		Mondi SCP	
	2024	2023	2024	2023
Earnings from sales and services and other earnings	767,042	717,035	759,138	712,782
Net profit	79,804	(44,059)	79,250	(25,908)
Total assets	989,317	897,740	991,881	900,392
Non-current assets	634,817	667,856	638,490	671,247
Current assets	354,500	229,884	353,391	229,145
Total liabilities	989,317	897,740	991,881	900,392
Total payables	241,070	229,419	243,250	231,127
Equity	748,247	668,321	748,631	669,265
Average number of employees	1,355	1,399	1,280	1,321

Net profit increased compared to 2023 to a new record thanks to several drivers. Year 2024 started with some encouraging signs of recovery, with restocking and price increases across all our paper grades combined with lower input costs. As the year progressed the market recovery faltered with some of our markets experiencing a lacklustre demand environment resulting in prices first stabilizing and then declining into the end of the year. Input costs were lower than in the prior year following price declines across most of input cost categories, with the largest benefits achieved from lower wood, chemical and energy cost. Paper for recycling cost was higher due to price increases in the first half of 2024, which largely reversed over the second half of the year.

Mondi SCP aims to deliver value accretive growth for all our stakeholders by making packaging and paper solutions that are sustainable by design. We leverage our integrated business model to maintain our market leading positions, meet evolving customer preferences and contribute towards the transition to a circular economy.

In 2024 Mondi SCP delivered further progress across each of its four strategic pillars: drive performance along the value chain, invest in quality assets, partner with our customers, and empower our people.

Sustainability is core to our strategy, and we have continued to make progress against our commitments through our Mondi Action Plan 2030 (MAP2030). MAP2030 is our sustainability framework to 2030, focusing on three action areas and built on our purpose of contributing to a better world by making innovative packaging and paper solutions that are sustainable by design. By implementing continuous improvement initiatives to optimise productivity, enhance our efficiency and eliminate waste across our operations, we gain considerable competitive advantage. Our focus on minimising the environmental impacts of our operations is demonstrated by our target to reduce waste to landfill per tonne of production by 30% by 2030, against a 2020 baseline. We continue to improve our data collection and analytics capabilities to enable us to support our customers with product-related data to manage their Scope 3 emissions, as well as maintaining traceability of our fibre sources (EUDR).

We are the supplier of choice for our customers, leveraging our leading positions in Central Europe. Our business remains well placed, with our customers valuing us as a supplier of choice and recognising the strength of our leadership positions, underpinned by a broad product portfolio, integrated asset base and excellent service.

We are focused on creating an inspiring, inclusive and safe workplace that empowers our teams and enables leaders to take accountability for attracting, developing, and retaining talent to foster innovation and growth. Ensuring the safety of our colleagues remains our top priority.

We offer our customers a broad range of sustainable uncoated fine and packaging paper products. We have a long track record of delivering on climate action and continue to make good progress towards achieving our Net-Zero commitment by 2050. We continue to focus on climate resilience, maintaining zero deforestation in our wood supply, sourcing wood responsibly, and safeguarding biodiversity and water resources in our operations and beyond.

Management put procedures in place for identifying, evaluating, and managing the risks and establish effective systems and controls to manage these risks. Our internal controls aim to provide reasonable assurance as to the accuracy, reliability and integrity of our financial information, non-financial disclosures and the Mondi SCP Group's compliance with applicable laws, regulations and internal policies as well as the effectiveness of internal processes.

Risk management is by its nature a dynamic and ongoing process.

Our principal operational risks relate to the following:

- Cost and availability of raw materials
- Energy security and related input costs
- Technical integrity of our operating assets
- Environmental impact
- Employee and contractor health and safety
- Attraction and retention of key skills and talent
- Cyber security risk

We have a zero tolerance approach to non-compliance. Our strong culture and values underpin our approach. These are emphasised in every part of our business with a focus on integrity, honesty and transparency. Our principal compliance risk relates to reputational risk.

Mondi SCP does not have its own research and development (R&D) centre. R&D activities are carried out by sister companies within Mondi Group.

Mondi SCP did not acquire own treasury shares, temporary certificates, ownership interests and shares, or temporary certificates or ownership interests of a parent entity.

Mondi SCP does not have a branch office in a foreign country.

The management of the company will propose the 2024 profit distribution at the Annual General Meeting.

Mondi group

SUBSIDIARIES

The subsidiaries, SLOVWOOD Ružomberok, a.s., Slovpaper Recycling s.r.o., Slovpaper Collection s.r.o., Strážna služba VLA - STA, s.r.o. and Obaly S O L O, s.r.o., are under obligation to prepare independent financial statements in accordance with Slovak Accounting Standards (SAS).

The differences between IFRS and SAS are immaterial for the comments describing the development of the individual companies.

The subsidiaries of Mondi SCP were closely connected with their parent company as a substantial part of their production and activities was realised directly with the parent company. Mondi SCP Group thus uses the competitive advantage of this connection to contribute to the results of the whole Group.

SLOWWOOD RUŽOMBEROK, a.s.

SLOWWOOD Ružomberok, a.s. is a fully consolidated subsidiary of Mondi SCP. It is the largest trading company for wood and biomass on the Slovak market. It provides its clients with professional and competitive solutions while maintaining ethical values and sustainable development of the forests, where the company focuses on increasing the share of certified raw materials from sustainable forestry. All activities of the company are carried out with the full support and in cooperation with the parent company.

SLOWWOOD Ružomberok, a.s. ensures supplies of wood used for the production of pulp from both domestic and foreign markets.

In 2024 SLOWWOOD Ružomberok, a.s. purchased higher volume than in 2023. Almost the entire volume of the purchased wood was delivered to Mondi SCP, while the largest share was hardwood pulpwood.

SLOVPAPER RECYCLING s.r.o.

The company collects and trades paper for recycling mainly for parent company, Mondi SCP, and only 10% to external partners. Slovpaper Recycling s.r.o. has shares in a subsidiary Slovpaper Collection, s.r.o. and two joint ventures, East Paper, spol. s r.o. and RECOPAP, s.r.o..

SLOVPAPER COLLECTION s.r.o.

The company runs collection depo for paper for recycling in Trenčín. All activities of the company are carried out with the full support and in cooperation with the parent company Slovpaper Recycling s.r.o., for which is it an important business partner. The company is collecting and selling paper for recycling and plastic also for external partners.

OBALY SOLO, s.r.o.

Obaly S O L O, s.r.o. is a subsidiary of Mondi SCP and owns a minority share of Slovpaper Recycling s.r.o.

The Events of Particular Importance that Occurred after the End of the Accounting Period

After December 31, 2024, no significant events occurred, which would affect the group's assets and liabilities recognised in these financial statements.

Ružomberk, 31 March 2025

Background

The European Commission presented a new growth strategy in 2019, the European Green Deal with the aim to reduce net greenhouse gas emissions to zero by 2050 and to support economic growth through the most efficient and sustainable use of natural resources.

Regulation (EU) 2020/852 of the European Parliament and Council (the "Taxonomy Regulation") was introduced to create a common classification system for sustainable economic activities.

The current legislation under the Commission Delegated Regulation (EU) 2021/2139 of 4 June 2021 ("Climate Delegated Act") sets conditions under which an economic activity qualifies as contributing substantially to climate change mitigation or climate change adaptation and causes no significant harm to any of the other environmental objectives. The Commission Delegated Regulation (EU) 2021/2178 of 6 July 2021 ("Delegated Act on disclosures") specifies the content and presentation of information to be disclosed by undertakings and the methodology to comply with that disclosure obligation. Commission delegated regulation 2022/1214 valid from 1 January 2023 amended delegated regulation 2021/2139 with two additional economic activities, which are not applicable for Mondi SCP. There were no additional economic activities applicable for Mondi SCP for year 2024.

Companies in scope of Taxonomy Regulation are obliged to report the share of Taxonomy-eligible and Taxonomy-aligned activities in their operations. Taxonomy-eligibility describes if an economic activity is included in the scope of activities recognised in the Climate Delegated Act. Taxonomy-alignment describes if an economic activity is sustainable based on defined technical screening criteria specified for the activity. The criteria for 'substantial contribution' determine that the economic activity either has a substantial positive environmental impact or substantially reduces negative impacts on the environment. The criteria for 'do no significant harm' determine that the economic activity does not impede on the other environmental objectives from being reached, such that the activity has no significant negative impact on them. A taxonomy-aligned activity needs to be also carried out in compliance with the minimum safeguards, meaning that a sustainable activity respects basic human rights and follows good business conduct rules.

The Taxonomy Regulation is a developing regulation and does not yet cover all sustainable activities in the market.

EU Taxonomy-related accounting principles

The quantitative disclosure requirements of EU Taxonomy (KPIs) are presented in separate tables for turnover, capital expenditure (CapEx) and operating expenditure (OpEx) as defined in the Delegated Act on disclosures. The Taxonomy-eligible OpEx include the corresponding direct non-capitalised costs associated to the economic activities reported under Taxonomy-eligible. The Taxonomy-eligible CapEx include the investments related to assets or processes associated with respective economic activities.

Definitions:

- Turnover – Turnover is based on net sales of the Group as defined in the Group financial statements
- Capital Expenditure (CapEx) – additions to tangible and intangible fixed assets, before any depreciations, impairments, amortisation charges, re-measurements, revaluations and fair valuations during the financial year, including IFRS 16 lease additions.

- Operating Expenditure (OpEx) – expenditure consists of direct non-capitalised costs that relate to research and development, building renovation measures, short-term lease, maintenance and repair, and any other direct expenditures relating to the day-to-day servicing of assets, property, plant and equipment that are necessary to ensure the continued and effective functioning of such assets. This excludes expenditure relating to the day-to-day operation of property, plant and equipment such as: raw materials, cost of employees operating the machine and the cost of energy.

Taxonomy-eligible and Taxonomy-aligned economic activities

Mondi SCP Group has carried out the assessments for Taxonomy-eligibility and Taxonomy-alignment based on the best interpretation of the Taxonomy Regulation, the Climate Delegated Act and the currently available guidelines from the European Commission.

The assessment of the Taxonomy-eligible activities was done on group level by a group of experts for every economic activity. As a result of this assessment, we have concluded that 4 activities are Taxonomy-eligible activities, from which 2 were further assessed to determine possible Taxonomy-alignment. External consulting company supported us with the taxonomy-alignment assessment of Mondi SCP Group's two selected activities to determine whether they are meeting the criteria for substantial contribution to climate change mitigation and adaptation, do no significant harm sustainable use and protection of water and marine resources, transition to circular economy, pollution prevention and control, protection and restoration of biodiversity and ecosystems. Based on the assessment result none of these two activities was considered as taxonomy-aligned economic activity.

Mondi SCP Group currently do not have information about our suppliers' taxonomy-aligned economic activities as they do not provide such an information. For upcoming reporting periods, we will require information from our suppliers on whether their outputs represent a Taxonomy-aligned economic activity.

Mondi SCP accounting system allows to determine Turnover, Capex and Opex per each economic activity. Production facilities of Mondi SCP are not used in an integrated manner and KPIs cannot be disaggregated.

Taxonomy-eligible economic activities

NACE Code	Activity number	Name of economic activity	Eligible activity	Aligned activity
D35.11, D35.30	4.19	Cogeneration of heat and power from renewable non-fossil gaseous and liquid fuels	x	
D35.11, D35.30	4.20	Cogeneration of heat/cool and power from bioenergy	x	
D35.30	4.15	District heating/cooling distribution	x	
E36.00, F42.99	5.1	Construction, extension and operation of water collection, treatment and supply systems	x	

4.15 District heating/cooling distribution

- Construction, refurbishment and operation of pipelines and associated infrastructure for distribution of heating and cooling. Steam pipes ending at a heat exchanger from where the steam is sold externally.

4.19 Cogeneration of heat and power from renewable non-fossil gaseous and liquid fuels

- Construction and operation of combined heat and power generation facilities using non-fossil gaseous and liquid fuels of renewable origin. Mondi SCP Group generates heat in recovery boilers by burning black liquor. Electricity is produced in turbines using the heat from our recovery boilers.

4.20 Cogeneration of heat/cool and power from bioenergy

- Construction and operation of installations used for cogeneration of heat and power exclusively from biomass.

5.1 Construction, extension and operation of water collection, treatment and supply systems

- Industrial, demineralized & waste water treatment at Mondi SCP Group at its own water treatment facility, which is used for waste water from the town of Ruzomberok as well. Fresh water is treated for internal use only.

Minimum safeguards

The Taxonomy Regulation specifies that in addition to substantial contribution and 'do no-significant harm' criteria, an economic activity can be considered environmentally sustainable only if it is carried out in compliance with the minimum safeguards. The minimum safeguards prevent activities from being labelled sustainable if they for example violate human or labour rights, engage in corrupt, anti-competitive or non-compliant taxation practices. The compliance can be assessed from two angles according to the published guidance from Platform on Sustainable Finance: there are adequate processes and controls in place in the areas of human rights, corruption, taxation and fair competition and there are no breaches or violations existing.

Mondi SCP Group has assessed the compliance with minimum safeguards by reviewing the company processes for human rights, corruption, taxation and fair competition and investigated possible cases of violation by its subsidiaries or senior management.

While Mondi SCP Group acknowledges the importance of continuous improvement of the processes in these areas, the Group considers its processes to be on a robust level and with no violations to meet the alignment with the minimum safeguards.

Template: Proportion of turnover from products or services associated with Taxonomy-aligned economic activities – disclosure covering year 2024

Presented in Euro thousands (€'000)

Economic activities	NACE Codes	Absolute turnover	Proportion of turnover	Substantial contribution criteria							DNSH criteria ('Does Not Significantly Harm')				Taxonomy-aligned proportion of turnover, year 2024	Category (enabling activity)	Category (transitional activity)
				Climate change mitigation	Climate change adaptation	Water and marine resources	Circular economy	Pollution	Biodiversity and ecosystems	Climate change mitigation	Climate change adaptation	Water and marine resources	Circular economy	Pollution			
A. Taxonomy-Eligible Activities																	
A.1. Environmentally sustainable activities (Taxonomy-aligned)																	
Turnover of environmentally sustainable activities (Taxonomy-aligned) (A.1.)			0%													0%	
A.2. Taxonomy-Eligible but not environmentally sustainable activities (not Taxonomy-aligned activities)																	
Cogeneration of heat and power from renewable non-fossil gaseous and liquid fuels		D35.11, D35.30	-	0%													
Construction, extension and operation of water collection, treatment and supply systems		E36.00, F42.99	294	0%													
District heating/cooling distribution		D35.30	5,045	1%													
Cogeneration of heat/cool and power from bioenergy		D35.11, D35.30	-	0%													
Turnover of Taxonomy-eligible but not environmentally sustainable activities (not Taxonomy-aligned activities) (A.2.)			5,339	1%													
Total (A.1 + A.2)			5,339	0.70%													
B. Taxonomy-non-eligible activities																	
Turnover of Taxonomy-non-eligible activities (B)			761,702	99%													
Total (A + B)			767,042	100%													

Determination of the turnover KPI:

Denominator: turnover Mondi SCP, a.s. consolidated financial statement, Note 5

Numerator: revenue for each Taxonomy-aligned activity as per related customers

Template: Proportion of CapEx from products or services associated with Taxonomy-aligned economic activities – disclosure covering year 2024

Presented in Euro thousands (€'000)

Economic activities	NACE Codes	Absolute CapEx	Proportion of CapEx	Substantial contribution criteria							DNSH criteria ("Does Not Significantly Harm")							Taxonomy-aligned proportion of CapEx, year 2024	Category (enabling activity)	Category (transitional activity)
				Climate change mitigation	Climate change adaptation	Water and marine resources	Circular economy	Pollution	Biodiversity and ecosystems	Climate change mitigation	Climate change adaptation	Water and marine resources	Circular economy	Pollution	Biodiversity and ecosystems	Minimum safeguards				
A. Taxonomy-Eligible Activities																				
A.1. Environmentally sustainable activities (Taxonomy-aligned)																				
CapEx of environmentally sustainable activities (Taxonomy-aligned) (A.1.)			0%														0%			
A.2. Taxonomy-Eligible but not environmentally sustainable activities (not Taxonomy-aligned activities)																				
Cogeneration of heat and power from renewable non-fossil gaseous and liquid fuels	D35.11, D35.30	56	0%																	
Construction, extension and operation of water collection, treatment and supply systems	E36.00, F42.99	266	1%																	
District heating/cooling distribution	D35.30	-	0%																	
Cogeneration of heat/cool and power from bioenergy	D35.11, D35.30	213	1%																	
CapEx of Taxonomy-eligible but not environmentally sustainable activities (not Taxonomy-aligned activities) (A.2.)		535	1%																	
Total (A.1 + A.2)		535	2.2%																	
B. Taxonomy-non-eligible activities																				
CapEx of Taxonomy-non-eligible activities (B)		23,505	98%																	
Total (A + B)		24,040	100%																	

Determination of the Capex KPI:

Denominator: CapEx additions as per Mondi SCP, a.s. consolidated financial statement, Note 12-13
 Numerator: taxonomy-aligned CapEx related to fixed asset additions for each activity determined by related cost centre

Template: Proportion of OpEx from products or services associated with Taxonomy-aligned economic activities – disclosure covering year 2024

Presented in Euro thousands (€'000)

Economic activities	NACE Codes	Absolute OpEx	Proportion of OpEx	Substantial contribution criteria							DNSH criteria ('Does Not Significantly Harm')				Minimum safeguards	Taxonomy-aligned proportion of OpEx, year 2024	Category (enabling activity)	Category (transitional activity)
				Climate change mitigation	Climate change adaptation	Water and marine resources	Circular economy	Pollution	Biodiversity and ecosystems	Climate change mitigation	Climate change adaptation	Water and marine resources	Circular economy	Pollution				
A. Taxonomy-Eligible Activities																		
A.1. Environmentally sustainable activities (Taxonomy-aligned)																		
OpEx of environmentally sustainable activities (Taxonomy-aligned) (A.1.)		-	0%													0%		
A.2. Taxonomy-Eligible but not environmentally sustainable activities (not Taxonomy-aligned activities)																		
Cogeneration of heat and power from renewable non-fossil gaseous and liquid fuels	D35.11, D35.30	5,585	8%															
Construction, extension and operation of water collection, treatment and supply systems	E36.00, F42.99	2,598	4%															
District heating/cooling distribution	D35.30	-	0%															
Cogeneration of heat/cool and power from bioenergy	D35.11, D35.30	2,637	4%															
OpEx of Taxonomy-eligible but not environmentally sustainable activities (not Taxonomy-aligned activities) (A.2.)		10,820	15%															
Total (A.1 + A.2)		10,820	15%															
B. Taxonomy-non-eligible activities																		
OpEx of Taxonomy-non-eligible activities (B)		62,883	85%															
Total (A + B)		73,703	100%															

Determination of the OpEx KPI:

Denominator: maintenance costs as per Mondi SCP, a.s. consolidated financial statement, Note 6

Numerator: taxonomy-aligned OpEx related to maintenance costs for each activity determined by cost centre

Proportion of the Taxonomy eligible and aligned economic activities as per EU Taxonomy - disclosure covering year 2024 (turnover, CapEx, OpEx)

Year ending 31.12.2024	Total (EUR)	Proportion of Taxonomy-eligible (not-aligned) economic activities	Proportion of Taxonomy-aligned economic activities	Proportion of Taxonomy-non-eligible economic activities
Turnover	767,042	0.70%	0.00%	99.30%
CapEx	24,040	2.23%	0.00%	97.77%
OpEx	73,703	14.68%	0.00%	85.32%

For more information on Mondi Group Sustainable Development report can be found in „Sustainable Development report 2024“.

Mondi SCP, a.s.

Tatranská cesta 3
034 17 Ružomberok, Slovakia
+421 44 436 22 22

mondislovensko.com

